

Transportation Management System

EXPRESS, integration solutions by PCS Software, Inc.

A sale is not complete until product has reached the proper customer. Preparing and shipping orders using Express TMS can prevent a transit nightmare by integrating the driver, carrier, and customer resulting in a complete, seamless, and virtually instantaneous interaction. The implementation of multi-tier data access and enabled connectivity between databases creates a system that is capable of managing virtually any organizational structure.

Transportation Management



Transportation Management

- Dispatch and Load Planning
- Freight Brokerage
- Online Freight Tracking
- Document Imaging
- DOT Compliance, Driver Log Scanning
- Fuel Tax and Fuel Reporting
- Truck and Trailer Maintenance
Driver safety and compliance
- Built-in Interface to Google Earth for Satellite
Imaging and Routing

Solution:

Simplify the order delivery process through effective coordination of products, drivers, and routes.

Results:

Organizes all aspects of shipping, providing companies with a higher degree of accuracy.

Testimonial

"After using this system for over 2.5 years, we've had no issues. It's very easy to use and has many features that are extremely beneficial to the trucking and brokerage industry."

Ed Adams, Don's Cold Storage

Simplify your delivery with EXPRESS TMS

Batch Manager

- Fully customizable. Build and save your own screens, set your own filters, pick your own fields
- Quick filtering
- Loads sorted by priority, highlighted by status

Booking Freight

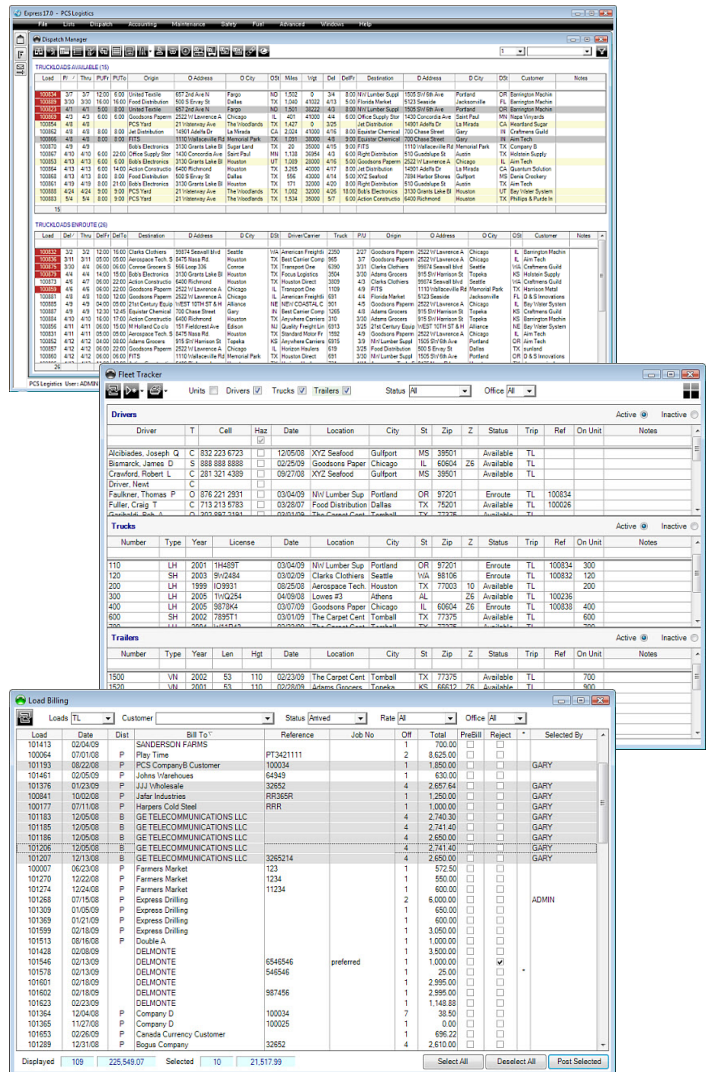
- Easy and fast order with no mouse necessary
- Automatic mileage calculations
- Checks for duplicates and checks customer credits as you go
- Add customers and shippers on-the-fly

Dispatching

- Dispatch your own trucks and drivers or broker the freight out
- Automatically calculates drive and carrier pay
- Transmits dispatch information to XpressTrax and other satellite systems
- Allows carriers to post status updates that are viewable by your customers

Built-In Accounting

- Accounts receivable
- Accounts payable
- Banking
- General ledger
- Payroll
- Powerful reporting and export capability
- Direct deposit and E-filing



Interface Management

The Interface Manager module enables the user to maintain warehouses and owners, while sharing data with outside systems and applications. The user can make adjustments to affect the frequency of data synchronization between databases. Using the interface tool, users can view, add, edit, and delete an interface and its settings.