



FootPrint[®] **TRANSPORTATION MANAGEMENT SYSTEM TMS**

EXPRESS, integration solutions by PCS Software, Inc.

A sale is not complete until product has reached the proper customer. Preparing and shipping orders using Express TMS can prevent a transit nightmare by integrating the driver, carrier and customer resulting in a complete, seamless and virtually instantaneous interaction. The implementation of multi-tier data access and enabled connectivity between databases creates a system that is capable of managing virtually any organizational structure.



TMS Features:

- Dispatch and Load Planning
- Freight Brokerage
- Online Freight Tracking
- Document Imaging
- DOT Compliance, Driver Log Scanning
- Fuel Tax and Fuel Reporting
- Truck and Trailer Maintenance
- Driver safety and compliance
- Built-in Interface to Google Earth for Satellite Imaging and Routing

Solution:

Simplify the order delivery process through effective coordination of products, drivers, and routes.

Results:

Organizes all aspects of shipping, providing companies with a higher degree of accuracy.

Testimonial:

After using this system for over 2 ½ years we've had no issues. It's very easy to use and has many features that are extremely beneficial to the trucking and brokerage industry.

Ed Adams- Don's Cold Storage

Dispatch Manager

- Fully customizable. Build and save your own screens, set your own filters, pick your own fields
- Quick filtering
- Loads sorted by priority, highlighted by status

Booking Freight

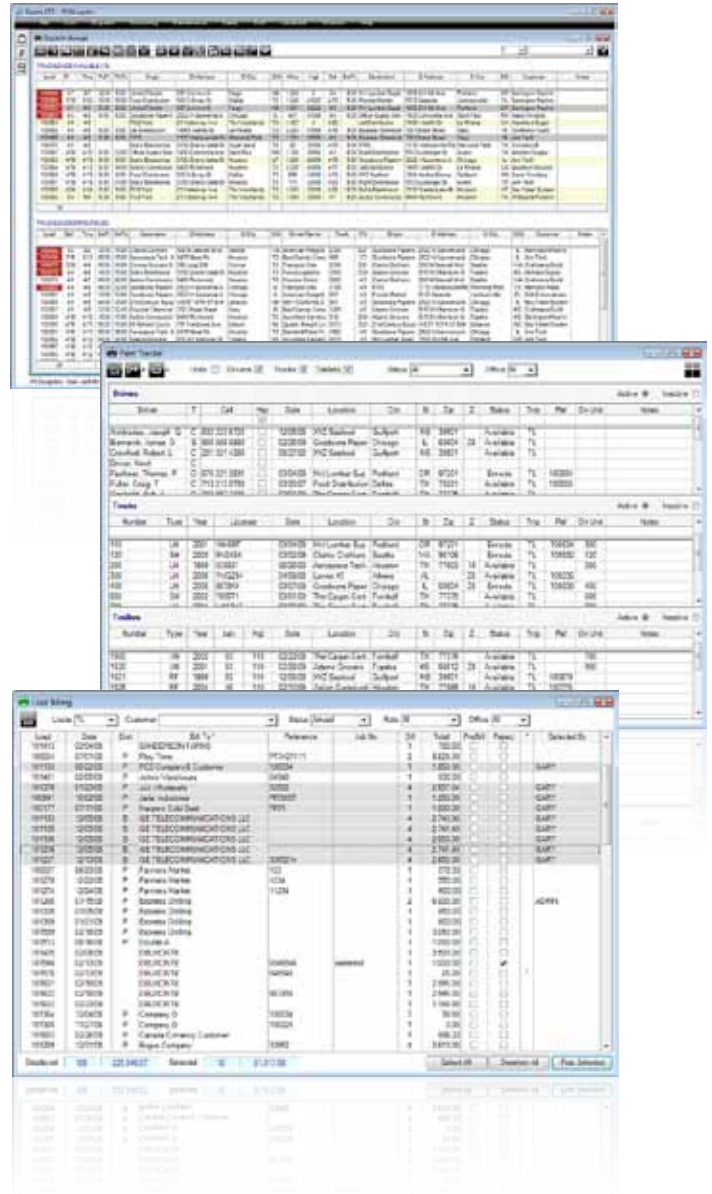
- Easy and fast order with no mouse necessary
- Automatic mileage calculations
- Checks for duplicates and checks customer credits as you go
- Add customers and shippers on-the-fly

Dispatching

- Dispatch your own trucks and drivers or broker the freight out
- Automatically calculates driver and carrier pay
- Transmits dispatch information to XpressTrax and other satellite systems
- Allows carriers to post status updates that are viewable by your customers

Built-In Accounting

- Accounts receivable
- Accounts payable
- Banking
- General ledger
- Payroll
- Powerful reporting and export capability
- Direct deposit and E-filing



Interface Management

The Interface Manager module enables the user to maintain warehouses and owners, while sharing data with outside systems and applications. The user can make adjustments to affect the frequency of data synchronization between databases. Using the interface tool, users can view, add, edit and delete an interface and its settings.

Datex Corporation

Datex is a leader in the development of software solutions designed to empower companies to increase visibility and mobility. We offer our customers tools which enable them to decrease logistics costs, increase productivity and become fierce competitors in their industries. Committed to setting the standard for excellence, we pride ourselves on the level of personal attention and assistance we offer our clients.



10320 49th Street
Clearwater, FL 33762
USA (Headquarters)

2329 Guenette Street
Montreal, PQ H4R 2E9
Canada

7230 Franklin Ave, Suite 314
Los Angeles, CA 90046
USA

1.800.933.2839

sales@datexcorp.com

www.datexcorp.com