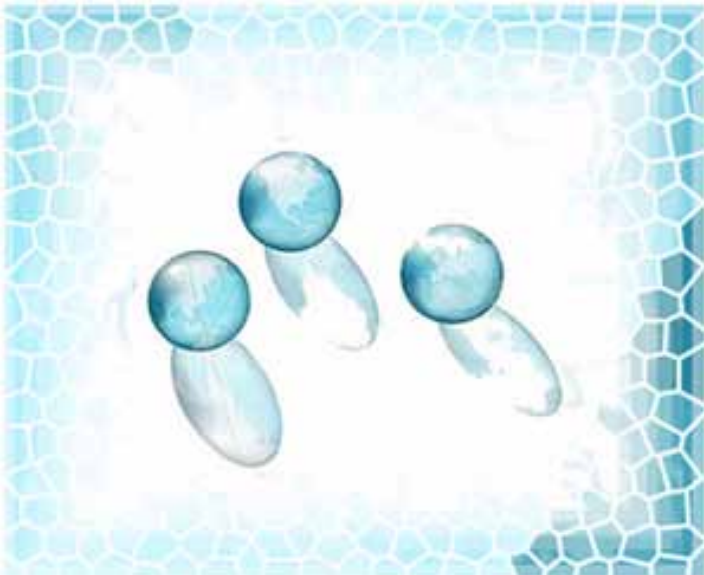




## **FootPrint<sup>®</sup>** **WAREHOUSE MANAGEMENT SYSTEM 3PL**

Designed for Third Party Logistics Providers

Datex FootPrint<sup>®</sup> 3PL is our Warehouse Management System developed from the ground up for Third Party Logistics Providers who maintain inventory for multiple clients. The system provides complete WMS functionality including modules for receiving, putaway, inventory management, picking, packing, shipping as well as 3PL invoicing and billing. The system allows complete personalization of the billing cycle. Billing can automatically capture at the end of each cycle all the operations and tasks performed, giving you a complete count of all the billable costs associated with each client allowing you to maximize your profits and avoid losses.



### **3PL Warehouse Management**

- Capture accessorial charges
- Automatic invoice creation
- Cycle counting and physical inventory
- Multiple billing parameters
- Custom billing by owner
- Customer access through e-Portal
- Credit card processing
- Cloaked owner transfer

For companies in the 3PL business, customer service is a key factor for the success of the business. In this case, customer service translates into higher inventory visibility, accurate inventory, and faster order processing. When combined with FootPrint e-Portal, you can provide your customers access to all the visibility, efficiency, and productivity of the system through the use of Internet.

#### **Testimonial:**

**" We are excited to be moving to an RF-based platform and look forward to working with Datex."**

**Karen Reece, Eskimo Cold**

## INCREASED CUSTOMER SERVICE

FootPrint® 3PL allows companies to track any kind of inventory such as electronic equipment, apparel, food and beverage among many others. The system provides complete tracking of serial numbers, lot number and expiration. It also provides several stock rotation systems such as FIFO, FMFO or LIFO.

The system also allows complete personalization of the billing cycle. It allows you the flexibility to offer customers different billing options that better fit their needs. Each owner's inventory is completely separated from other owners giving your customers the idea that they have their own warehouse.

### Inbound Operations

Execution			Inventory Management		
Shipment Scheduling	Quality Audit	Inbound Sortation	Putaway	Cycle Count	Serial # Tracking
Yard Management	Cross Docking	Vendor/Carrier Performance	Lot Management	Physical Count	Warehouse Transfers
Receiving	Flow Through	Returns	Inventory Consolidation	Work Orders	Inventory Control

### Outbound Operations

Planning		Fullfillment		Shipping	
Wave Management	Replenishment	Pick/Pack	Value Added Services	Parcel Shipping	Load Building Loading
Constraint Fulfillment	Dynamic Pick Locations	Put to Store	Multi-Channel Fulfillment	Routing/Rate Shopping	LTL/TL Rating
Inventory Allocation	Sortation Scheduling	Quality Audit	Item Substitution	Zone Skipping LTL Pooling	Shipping Documentation
Cartonization	Order Consolidation	Shipment Scheduling	Pack and Hold	International Shipping	Retail Compliance

## Datex Corporation

Datex is a leader in the development of software solutions designed to empower companies to increase visibility and mobility. We offer our customers tools which enable them to decrease logistics costs, increase productivity and become fierce competitors in their industries. Committed to setting the standard for excellence, we pride ourselves on the level of personal attention and assistance we offer our clients.



10320 49th Street  
Clearwater, FL 33762  
USA (Headquarters)

2329 Guenette Street  
Montreal, PQ H4R 2E9  
Canada

7230 Franklin Ave, Suite 314  
Los Angeles, CA 90046  
USA

1.800.933.2839

sales@datexcorp.com

www.datexcorp.com